

# ADP Ribosylated Peptides

Peter Gehrig<sup>1</sup>, Kathrin Nowak, Jonas Grossmann<sup>1,2</sup>, Christian Panse<sup>1,2,\*</sup>

<sup>1</sup>Functional Genomics Center Zurich, UZH|ETHZ  
Winterthurerstr. 190  
CH-8057, Zürich, Switzerland  
Telephone: +41-44-63-53912  
E-mail\*: [cp@fgcz.ethz.ch](mailto:cp@fgcz.ethz.ch)  
URL: <https://www.fgcz.ch>

<sup>2</sup>Swiss Institute of Bioinformatics  
URL: <https://www.sib.swiss>

## 1 Illustrations

This document reproduces Figures 1–5 presented in [Gehrig et al. \(2020\)](#). For a description of the theory behind applications shown here we refer to the original manuscript. The results differ slightly due to technical changes or bugfixes in **protViz** that have been implemented after the manuscript was printed.

**Data preprocessing** The mass spectrometric data were previously extracted from PRIDE [PXD017013](#) using the Bioconductor package **rawrr** [Kockmann and Panse \(2021\)](#) and the following code snippet.

```
> rawUrl <- paste0("http://ftp.pride.ebi.ac.uk",  
+   "/pride/data/archive/2021/05/PXD017013/20171220_15_Muscle_HCD35.raw")  
> f <- basename(rawUrl)  
> download.file(rawUrl, f )  
> scans <- c(9210, 13738, 14908, 7590, 10718)  
> ## read spectra  
> ## remove peaks with no intensity  
> ADPR.ms2 <- rawrr::readSpectrum(f, scans) |>  
+   lapply(function(x){  
+     idx <- x$intensity > 0  
+     list(mZ=x$mZ[idx], intensity=x$intensity[idx], scan=x$scan)  
+   })  
> ## peak assignments  
> ADPR.annotation <-  
+   readr::read_delim("/Users/cp//Downloads/2020-05-27_InputToLabelSpectra.tsv",
```

```

+           "\t", escape_double = FALSE, trim_ws = TRUE)
> ## subsetting
> ADPR.annotation <-
+   ADPR.annotation[,c('scanNr', 'PepSeq', 'mz', 'LabelLow', 'color')] |>
+   as.data.frame()
> ## some render metadata
> ADPR.lim <- readr::read_delim("/Users/cp/Downloads/lim.txt",
+   ", ", escape_double = FALSE, trim_ws = TRUE) |>
+   as.data.frame()
> save(ADPR.annotation, ADPR.ms2, ADPR.lim,
+   file="/tmp/ADPR.RData", compression_level = 9, compress = TRUE)

```

### Define helper function

```

> ## Heuristic to determine a useful y-axis range.
> ## While we deal with profile data we have to
> ## find the most intense peak within a mass window.
> .findLocalMaxIntensity <-
+   function(q, mZ, intensity, stepsize = 20, eps = 0.005){
+     n <- length(mZ)
+     idx <- protViz::findNN(q, mZ) |>
+     vapply(function(i){
+       i.max <- i
+
+       for (j in seq(i - stepsize, i + stepsize)){
+         if(0 < j & j <= n)
+           if (intensity[j] > intensity[i.max])
+             i.max <- j
+       }
+       i.max
+     }, FUN.VALUE = 1)
+     intensity[idx]
+   }

> ## Adapted protViz::peakplot plot function
> .peakplot <-
+   function(x, mZ, intensity, lim, ...){
+     p.i <- .findLocalMaxIntensity(x$mz, mZ, intensity)
+     sn <- unique(x$scanNr)
+     cutoff <- max(p.i) * lim$rintensity / 100
+
+     plot(intensity ~ mZ,
+          type = 'h',
+          xlab = 'm/z',
+          ylab = 'Relative Intensity [%]',

```

```

+         col = 'lightgrey',
+         xlim = c(lim$xmin, lim$xmax),
+         ylim = c(0, cutoff),
+         axes = FALSE);
+
+     legend("topright", "", title= unique(x$PepSeq), bty='n',cex=2)
+     legend("right", sprintf("% 10.3f  %s", x$mz,x$LabelLow),
+           title= "Fragment Ions", bty='n',cex=0.75)
+
+     axis(2, seq(0, max(intensity), length=11), round(seq(0, 100, length = 11)))
+
+     points(x$mz, p.i, col=x$color, type='h', lwd=2)
+     points(x$mz, p.i, col=x$color, pch=16,cex=0.5)
+
+     select <- p.i < 0.75 * max(intensity)
+
+     text(x$mz, p.i + 0.0125 * cutoff,
+          x$LabelLow, adj = c(0,0), cex=1.0, srt=90, , col=x$color)
+     idx <- p.i > cutoff
+
+     axis(1)
+     axis(3, x$mz[idx],
+           paste(x$LabelLow[idx], "(", round(100 * p.i[idx] / max(p.i)), "%)", sep=''),
+           cex=0.3)
+     box()
+ }

```

**Drawing**

```

> scan <- 9210
> idx <- which(vapply(ADPR.ms2, function(x)x$scan, 1) == scan)
> lim <- ADPR.lim[ADPR.lim$scan==scan,]
> .peakplot(
+   x = ADPR.annotation[ADPR.annotation$scanNr == scan,],
+   mZ = ADPR.ms2[[idx]]$mZ,
+   intensity = ADPR.ms2[[idx]]$intensity,
+   lim)

```

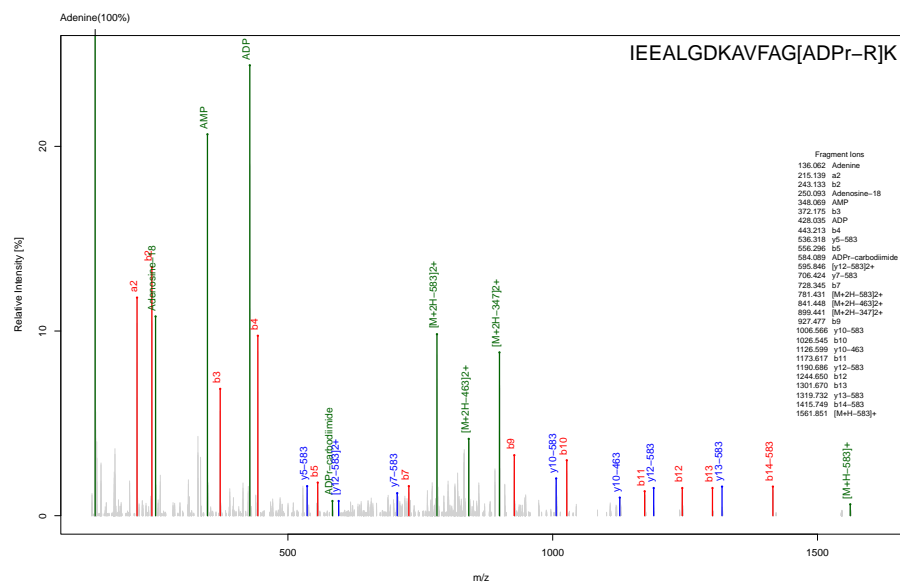


Figure 1: High-resolution HCD fragmentation spectrum of the triply charged peptide IEEALGDKAVFAGR\*K, which is ADP-ribosylated on the arginine residue. The N-terminal ion series are shown in red, the C-terminal ion series are in blue, and the ADP-ribosylation-specific marker ions and neutral losses from peptide ions are indicated in green.

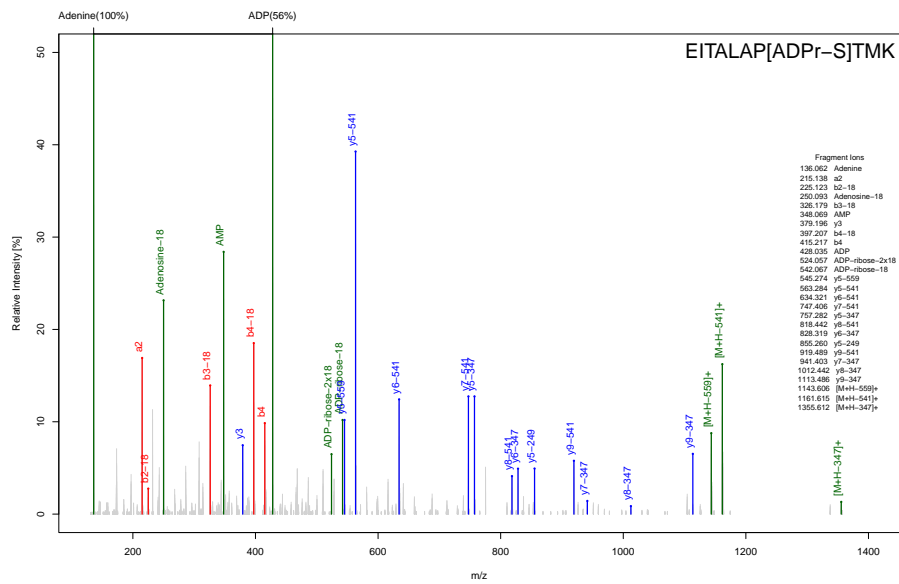


Figure 2: HCD fragmentation spectrum of the doubly charged peptide EITALAPS\*TMK, which is ADP-ribosylated on the serine residue.

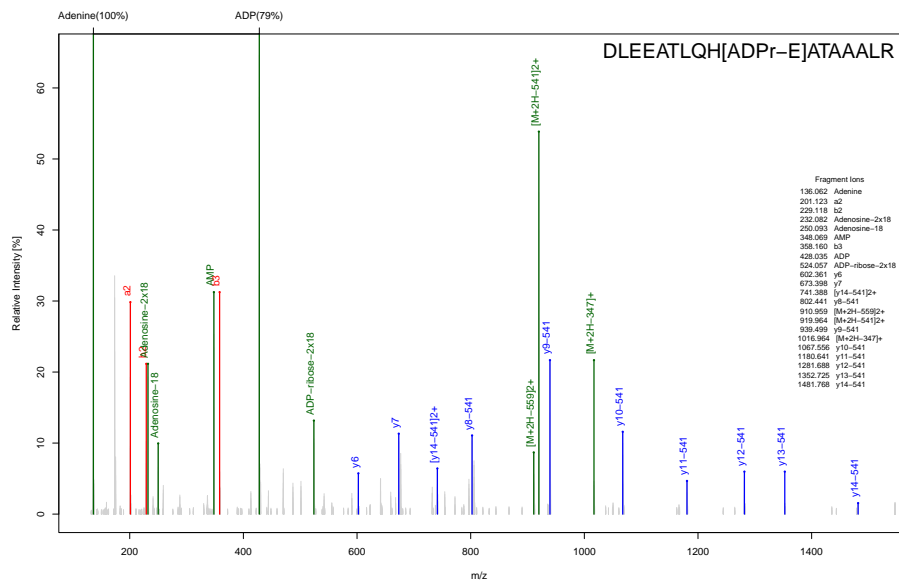


Figure 3: HCD spectrum of the triply charged peptide DLEEATLQHE\*ATAAALR, which is ADP-ribosylated on the indicated glutamic acid residue.

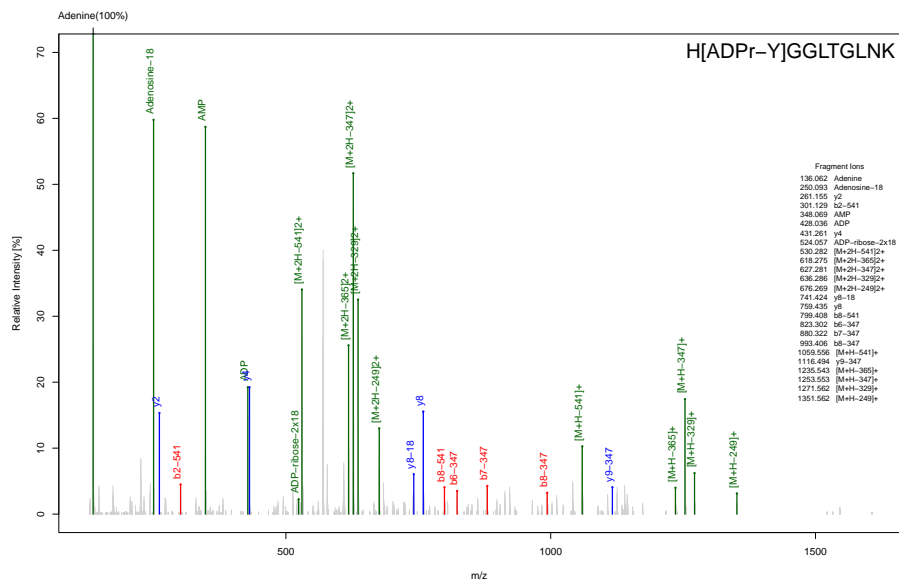


Figure 4: HCD spectrum of the doubly charged peptide HY\*GGLTGLNK, which is ADP-ribosylated on the tyrosine residue.

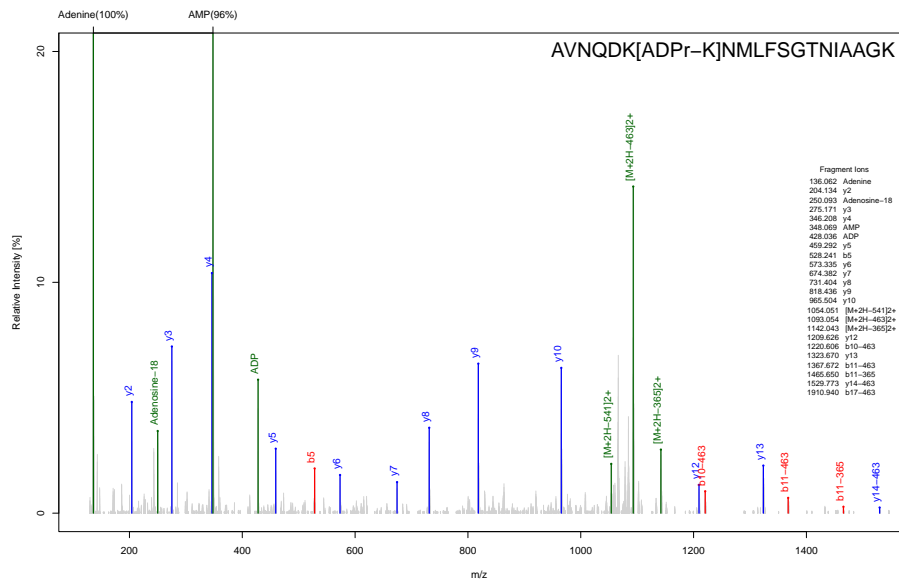


Figure 5: HCD spectrum of the triply charged peptide AVNQDK\***NMLFSGT NIAAGK**, which is primarily ADP-ribosylated on the indicated lysine and to a minor extent on the preceding lysine.



## References

Peter M. Gehrig, Kathrin Nowak, Christian Panse, Mario Leutert, Jonas Grossmann, Ralph Schlapbach, and Michael O. Hottiger. Gas-phase fragmentation of ADP-ribosylated peptides: Arginine-specific side-chain losses and their implication in database searches. *Journal of the American Society for Mass Spectrometry*, 32(1):157–168, November 2020. doi: 10.1021/jasms.0c00040. URL <https://doi.org/10.1021/jasms.0c00040>.

Tobias Kockmann and Christian Panse. The rawrr R package: Direct access to orbitrap data and beyond. *Journal of Proteome Research*, 2021. doi: 10.1021/acs.jproteome.0c00866. URL <https://doi.org/10.1021/acs.jproteome.0c00866>.